

DWOS 8.1 Release Info

June 2018

Release Notes

IMPROVEMENTS

User Interface

- Straumann Group Order: Created one common order type for order creation to unify all Straumann Group brands for material management and implant kits (Straumann, Medentika, Neodent and more).

Virtual Model Builder

- Rapid Shape Stump: Designed a new stump shape to optimize the fit and aesthetic of models printed on Dental Wings 3D printers.

Implants

Implant kits can now have multiple scan devices: Manufacturers who use multiple scan bodies with the same implant can now group them in one single kit within the DWOS implant library. The user may now:

- Switch between available scan bodies during the scan process.
- Reduce the number of implant kits in the system.

DWOS Easy Mode

Following feedback received from users of the design software, several new enhancements were added to the new DWOS Easy Mode introduced in DWOS 8.

Other Improvements

- Enhanced support of PLY/OBJ to increase file format specification coverage.
- Improved usability of low resolution files for facial scan imports.
- RSS feed management: default language will be English when no translation is available.

BUG FIXES

Crown & Bridge, Implant

- Computation of bridges over angulated screw channels has been improved.
- An issue with the spline edition tool on a high-resolution mesh has been fixed.

Scan Station

- A display issue, which could lead to misaligned scan data while changing the axis of the model has been fixed.

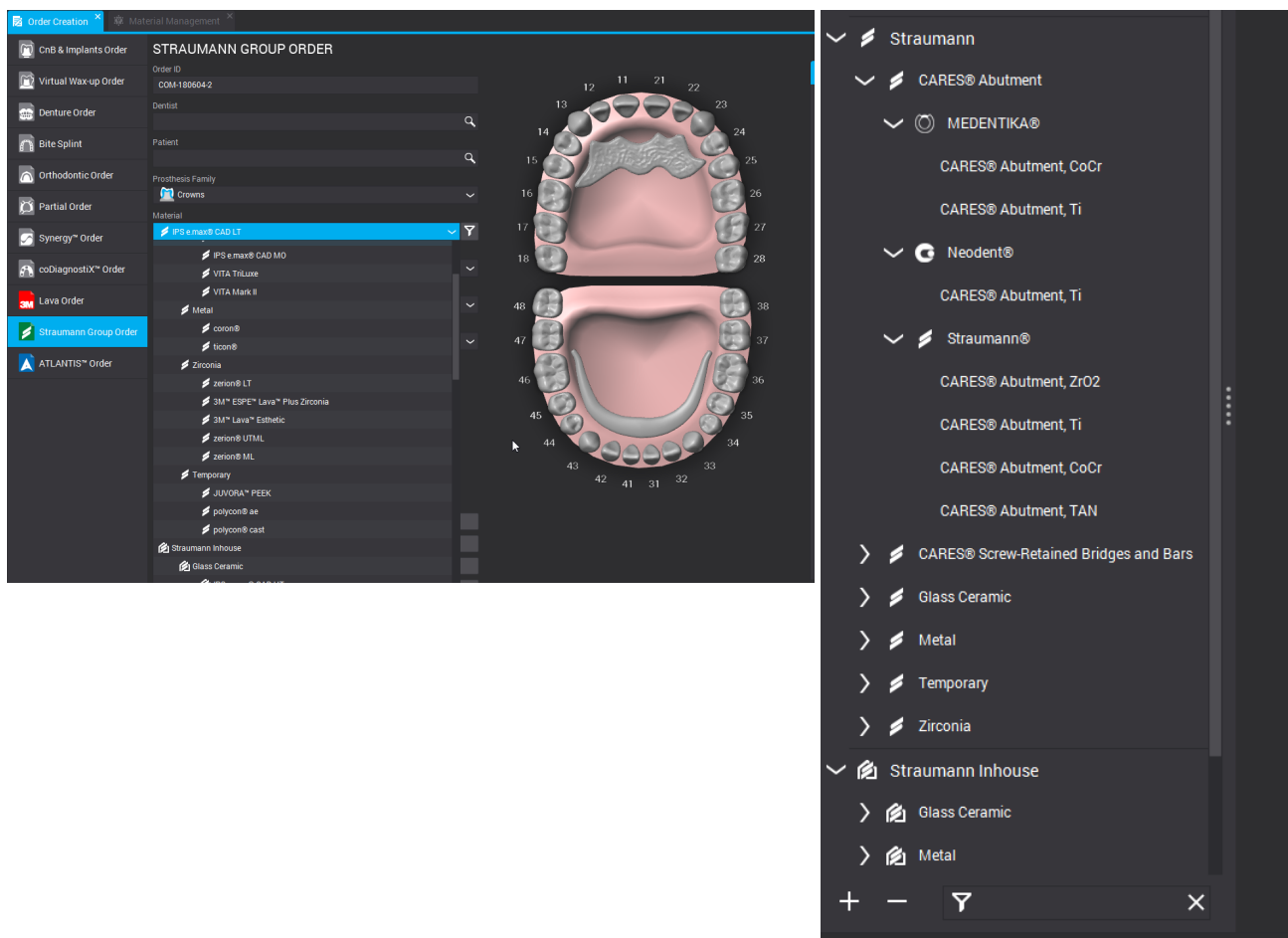
CARES® Plug-in

Straumann Group Order

This is a new order type that combines and replaces the previous "Straumann Order" and "Straumann In-house Order" allows access to the following production types:

- Centralized production
- In-house production
- 3rd Party production

With this newly implemented unification of all members within the Straumann Group, materials and implant kits are also grouped under the Straumann logo (Straumann, Medentika, Neodent and more).

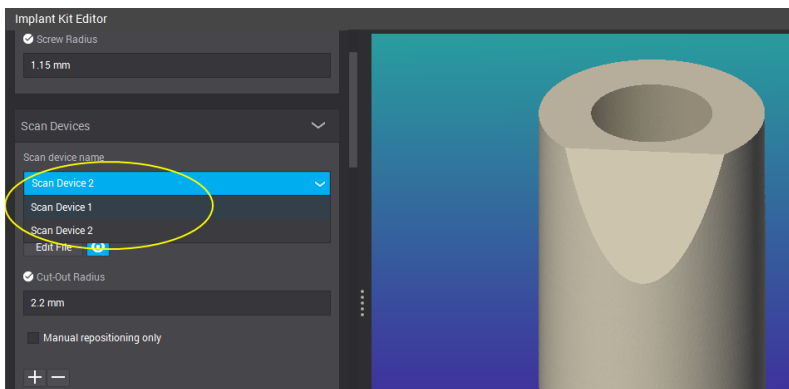


Implant Kit Library

Multiple Scan Devices per Implant Kit

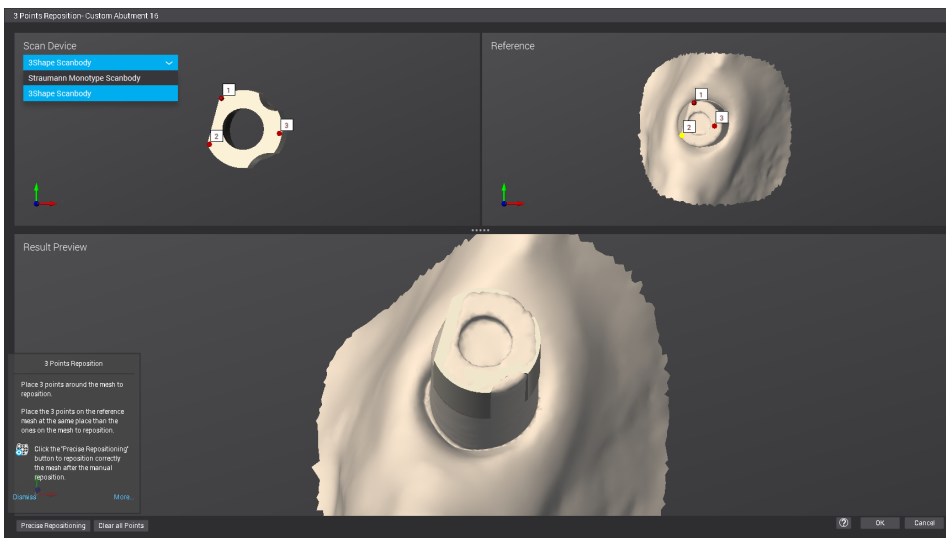
More than one scan device may be associated with an implant kit. Users can create one kit in the DWOS implant library for manufacturers that use multiple scan bodies for the same implant. The benefits of this include:

- The ability to switch between available scan bodies during the scan process.
- The number of implant kits in the system is reduced.



Scan Station

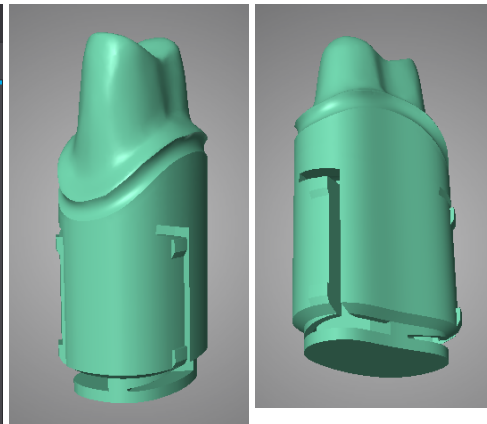
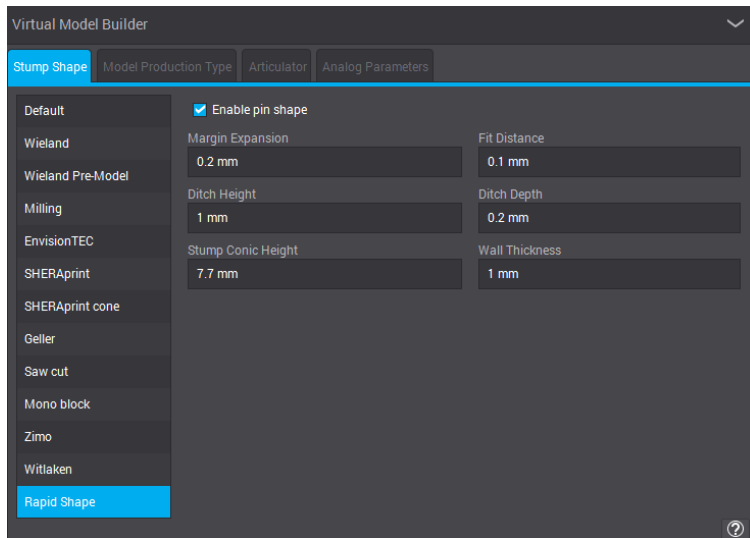
When performing 3-point repositioning in the scan station, use the drop-down menu to select the scan device installed on the model during scanning.



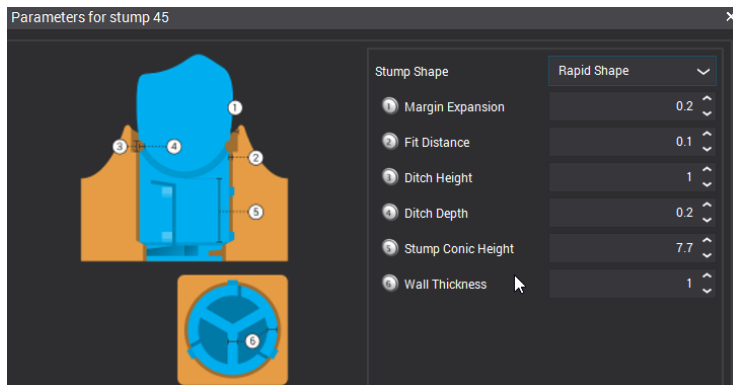
Virtual Model Builder

Rapid Shape Stump Type

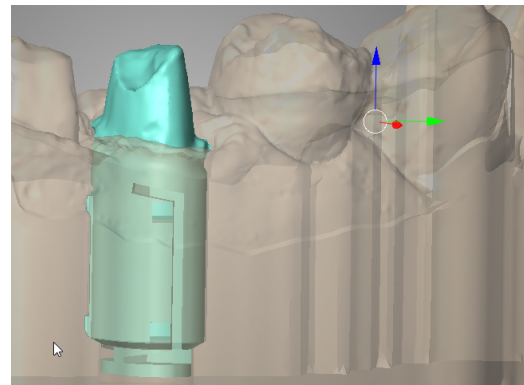
The new stump type was developed to optimize the capabilities of the Dental Wings 3D printers (manufactured by Rapid Shape). It improves the fit of stumps that are designed in the Model Builder station.



Activate the new stump shape per material in Material Management and set default dimensions.



Customize the dimensions in Model Builder station.



Model built with the Rapid Shape stump.